

# Richland School District

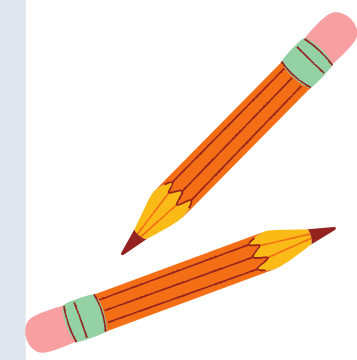
## Reopening Plan

School Starts September 1st

### Two Options Are Available:

1

## IN-PERSON



4 days face to face  
with 1 remote day.

2

## VIRTUAL



options for all  
levels.

## Safety and Health Protocol

**Masking:** Masking protocols will continue per guidance from Public Health and CDC Protocols.

**Lunch:** will be eaten in the classrooms. Children who choose Virtual will not have school lunch.

**Visitors:** that are allowed inside the building will be required to wear a face covering, maintain physical distancing and restrict visit to location designated by school.

**Cleaning:** regular, safe, and effective practices will be used in classrooms, common areas, high touch spaces, and on buses. There will be increased sanitizing stations in each building also.

**Drop-off and pick-up:** will be no-contact unless planned ahead of time with a teacher or administrator and takes place outdoors.

**Seating Arrangements:** Socially distant and assigned seats in classrooms and on buses and students will face the same direction as much as possible.

**Health Room:** there will be a room in each building where symptomatic students will wait for pickup. This will be in a separate location from the regular space used for normal health related/nurse services.

**Recess and Specials:** for hand washing, filling water bottles (drinking fountains are closed but we have bottle filling stations in every building), using the restroom, and mask breaks will all be built in by each teacher.

**Breaks:** for hand washing, filling water bottles (drinking fountains are closed but we have bottle filling stations in every building), using the restroom, and mask breaks will all be built in by each teacher.

### SAFETY

Safety is our main focus. Our guidance comes from the CDC, state and county health departments.

### FLEXIBILITY

Plans will be created to enable a smooth transition, considering parent, student, and staff needs; and resources of the Richland District.

### INSTRUCTION

Traditional classroom learning is the preference, however offering safe options is necessary. Safety creating conditions for schools to reopen is the goal.

### Changes to the School Environment:

- \*Recess will be in cohorts and socially distant.
- \*PE will held outdoors when possible.
- \*Class sizes are reduced for social distancing according to County Health recommendations.
- \*There will be traditional grading: Early Learning Standards(4K&5K), Standards-Based Report Cards (1st-4th) and 6th-12th are Normal Letter Grades (A-F).
- \*Passing times will be modified to minimize exposure each building varies.
- \*Grades 6-12 will run a modified block schedule with 4 classes a day to reduce transitions and exposure.